



MSc in Dento-Alveolar Surgery

Course Brochure

The **MSc in Dento-Alveolar Surgery** enhances the skills and confidence of general dental practitioners in minor oral surgery and implant site development. Combining core surgical sciences with advanced bone augmentation training, the programme is ideal for clinicians looking to expand their surgical scope and implant practice.



2026

About The Course

The MSc in Dento-Alveolar Surgery seeks to increase the general dentists' skills in minor oral surgery and develop competencies. Many straightforward cases requiring minor oral surgery treatment are referred for specialist treatment yet they could and should easily be within the scope of the general practitioner.

Apart from teaching basic surgical sciences the programme will teach advanced bone augmentation procedures essential for implant site enhancement.

This programme is ideal for general practitioners who want to hone their surgical skills to expand their practice and increase the scope of their implant placement.

Course Title

MSc in Dento-Alveolar Surgery

Duration

2 Years

Campus

SynTrain Academy &
Approved General Dental
Practices

Attendance

Part Time
1 Day A Month
Lectures/Clinical Practice
Observations

Entry Requirements

Postgraduate BDS or
Equivalent

Fees

Please refer to the website or
back of the brochure

Credits

180 Credits

Main Treatment Learning Outcomes:

By the end of this programme, delegates will learn and be able to:

- Assess and perform impacted wisdom tooth removal, including appropriate case selection and surgical techniques
- Diagnose and carry out root resection procedures where indicated, preserving strategic teeth
- Identify and manage odontogenic cysts, including surgical removal and appropriate referral where necessary
- Perform frenectomy procedures, understanding indications, techniques, and post-operative care
- Crown Lengthening
- Perform incision and flap elevation techniques using appropriate surgical principles
- Interpret OPG and CBCT radiographs for diagnosis and treatment planning
- Identify and manage risks and complications associated with surgical extractions
- Perform suturing techniques and apply principles of wound closure
- Diagnose and manage oral pathology including red/white patches and oral lumps
- Carry out cranial nerve examinations and understand relevant pathophysiology
- Assess and manage dental trauma including splinting, avulsion, and concussion injuries
- Wound Assessment
- Apply medico-legal principles including consent and scope of practice
- Bone and Bone Disease
- Assess salivary gland conditions and relevant clinical considerations
- Examine lymph nodes and assess neck lumps appropriately
- Carry out exodontia assessments including anatomy and extraction complications
- Diagnose and manage benign mucosal diseases including lichen planus and ulcerations
- Recognise malignant orofacial disease and common oral infections
- Understand the aetiology and management of orofacial pain



Structure

Year One - 1 DAY A MONTH TO INCLUDE:

- Lecture Programme and Practical Clinical Skills Development (Phantom Head/Sheep's Head Training)
- Supervised Clinical Practice On Live Patients
- Flexible Online Study
- Live Patient Demonstrations

Year Two - 1 DAY A MONTH TO INCLUDE:

- Tutorials with Dissertation Supervisor
- Dissertation Writing



Clinical Practice Rota

As part of your **PART TIME** MSc programme, you will be placed in an **Approved Oral Surgery Practice** where you will have the opportunity to observe and perform clinical dentistry including Oral Surgery treatment.

The experience you will gain will allow you to meet the requirements of your Clinical Professional Portfolio.

As part of your clinical practice placement, you will:

- Be placed in a Private Minor Oral Surgery Clinic Under an Tier 2 Oral Surgery Mentor
- The surgery environment will be fully digital with Intra Oral Scanners & CBCT
- You will have an opportunity to take part in Private Oral Surgery under direct supervision
- You will have the opportunity to assist in Oral Surgery and we aim to allow you to have five mentorship days
- You will complete a Clinical Portfolio



Teaching

As part of your MSc Programme, you will be taught both face to face and online too, to give you flexibility and avoid taking days off work

Clinical Skills Development

As part of your **PART TIME** MSc programme, you will have the opportunity to be taught in a high tech skills lab and oral surgery clinics.

This consists of practicing your skills on real sheep's head and having an opportunity to perform Oral Surgery on live patients within an Oral Surgery day list under direct supervision.

You will have:

- Practical experience in Dento Alveolar Surgery
- Hands-on training in our purpose built phantom head facility
- Comprehensive experience in oral surgery procedures
- Direct interaction and surgery with live patients
- Live patient demonstrations by experienced professionals
- Supervised clinical portfolio demonstrating competence, progression, and reflection.

Clinical Skills Development Timetable

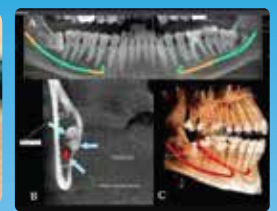
Month 1	The Examination & Anatomy
Month 2	Single Tooth, Multiple Teeth & Retained Root Extractions
Month 3	Pathology & Complications
Month 4	Trauma, Medico Legal & Crown Lengthening
Month 5	Clinical Attachments with Live Patients
Month 6	Clinical Attachments with Live Patients
Month 7	Clinical Attachments with Live Patients
Month 8	Bone & Bone Disease
Month 9	Exodontia Assessment
Month 10	Orfacial Infection Complications
Month 11	Clinical Attachments with Live Patients
Month 12	Clinical Attachments with Live Patients
Month 13–24	Understanding Research & Critical Appraisal (URECA) Reflective Clinical Practice Dissertation

The MSc programme is divided into separate modules. This ensures that you complete the requirements of the MSc Learning Outcomes.

The Modules are integrated within each of the separate course units. The course is designed in 12 face to face days to advance the learning of each delegate through the programme.

Unit 1 – The Examination & Anatomy

- Clinical Examination & Medical History
- Patient Assessment and Treatment Planning
- Head and Neck Anatomy
- Oral and Dento-Alveolar Anatomy
- Surgical Instruments and Their Uses
- Roles Within the Surgical Team
- Local Anaesthetic Techniques
- Injection Methods and Pain Control
- Incision and Flap Elevation Principles
- Soft Tissue Management
- Introduction to OPG Imaging
- CBCT and Three-Dimensional Radiography
- Radiographic Interpretation and Diagnosis
- Radiation Safety and Clinical Protocols
- Foundations of Safe Oral Surgery Practice



Unit 2 – Single Tooth, Multiple Teeth & Retained Root Extractions

- Surgical Procedure for Single Tooth Extractions
- Risks and Complications of Extractions
- Multiple Tooth Extraction Techniques
- Management of Surgical Complications
- Retained Root Removal Procedures
- Risk Assessment for Retained Roots
- Post-Operative and Aftercare Advice
- Suturing Techniques and Key Considerations
- Flap Design and Surgical Technique
- Tooth Sectioning Principles and Methods
- Live Surgical Observation and Clinical Learning
- Patient Safety and Clinical Decision-Making



Unit 3 – Pathology and Complications

- Introduction to Oral and Maxillofacial Pathology
- Recognition of Red and White Oral Lesions
- Assessment of Intra-Oral Lumps and Swellings
- Medicine-Induced Oral Lesions
- Distinctive Features of Oral Pathology
- Tooth Complications and Clinical Management
- Identification and Management of Cystic Lesions
- Types and Symptoms of Oral Cysts
- 12 Cranial Nerve Examination
- Trigeminal Nerve Function and Proprioception
- Corneal Reflex and Peripheral Nervous System Assessment
- Principles of Wound Healing
- Wound Assessment and Tissue Management
- Treatment Planning and Management of Complications



Unit 4 – Trauma, Medico-Legal & Crown Lengthening

Apicectomy

- Pre-surgical Considerations
- Complications & Risks
- Surgical Procedure for Apicectomy

Frenectomy

- Pre-surgical Considerations
- Complications & Risks
- Surgical Procedure for Frenectomy

Principles of Crown Lengthening Procedures

- Concept of Biologic Width
- Pre-Surgical and Restorative Considerations
- Esthetic and Functional Treatment Planning
- Surgical Techniques in Crown Lengthening
- Post-Operative Healing and Periodontal Factors
- Risks, Complications and Clinical Management

Dental Trauma

- Splinting of Traumatized Teeth
- Concussion and Subluxation Injuries
- Extrusive, Lateral and Intrusive Luxation
- Management of Tooth Avulsion
- Infraction and Enamel Fractures
- Enamel-Dentine and Crown Root Fractures
- Root and Alveolar Fractures
- Diagnosis and Emergency Management of Dental Trauma

Medico-Legal Issues

- History and Principles of Informed Consent
- Consent in Oral and Maxillofacial Surgery
- Negligence and Duty of Care
- Contractual and Statutory Liability
- Criminal Liability in Clinical Practice
- Legal Procedures and Professional Responsibilities
- The Evidence Act and Appeals Procedures
- Ethical and Legal Decision-Making in Dentistry



Unit 5 – Bone and Bone Disease

Bone and Bone Disease

- Bone Biology and Oral Surgical Relevance
- Bone Development, Healing and Regeneration
- Diagnosis and Management of Bone Pathology
- Systemic Conditions Affecting the Jawbone
- Radiological and Histopathological Evaluation
- Risk Assessment and Surgical Planning
- Research and Evidence-Based Practice

Lymph Nodes and Neck Lumps

- Assessment of Lymph Nodes
- Recognition and Evaluation of Neck Lumps
- Differential Diagnosis of Neck Swellings
- Clinical Examination and Referral Pathways

Salivary Glands

- Assessment and Examination of Salivary Glands
- Development and Classification of Salivary Glands
- Salivary Gland Anatomy and Function
- History Taking for Salivary Gland Disease
- Clinical Considerations and Diagnosis
- Salivary Secretion Disorders and Xerostomia
- Salivary Gland Obstruction and Blockages



Unit 6 – Exodontia Assessment

Exodontia Assessment

- Principles of Exodontia Assessment
- Tooth Anatomy and Surgical Considerations
- Tooth Complications and Risk Management
- Common Diseases Affecting Dental Structures
- Congenital Dental Problems and Variations
- Treatment Planning for Tooth Extraction Procedures

Benign Mucosal Disease

- Assessment of Benign Oral Mucosal Lesions
- Ulcerated and Traumatic Lesions
- Aphthous Ulcers and Geographic Tongue
- Frictional Keratosis and Oral Candidiasis
- Oral Lichen Planus
- Oral Submucous Fibrosis
- Leukoplakia and Erythroplakia
- Diagnosis and Management of Oral Soft Tissue Conditions



Unit 7 – Orofacial Infection Complications

Malignant Orofacial Disease

- Oral Squamous Cell Carcinoma
- Lip Carcinomas and Malignant Lesions
- Recognition of Oral Cancer Presentations
- Diagnosis, Referral and Management Pathways

Orofacial Infection Complications

- Streptococcus and Fusobacterium Species
- Anaerobic Gram-Negative Rod Infections
- Ludwig's Angina
- Descending Necrotizing Mediastinitis
- Cavernous Sinus Thrombosis
- Brain Abscess and Severe Infection Complications
- Management of Acute Orofacial Infections

Orofacial Pain

- Definition and Classification of Orofacial Pain
- Myofascial Orofacial Pain Disorders
- Temporomandibular Joint (TMJ) Disorders
- Cranial Nerve-Related Orofacial Pain
- Orofacial Pain Associated with Lesions and Disease
- Headache Disorders Mimicking Orofacial Pain
- Idiopathic Orofacial Pain
- Psychosocial Aspects of Orofacial Pain
- Assessment and Management of Chronic Pain Conditions



Module Outline

Patient Assessment and Risk Management

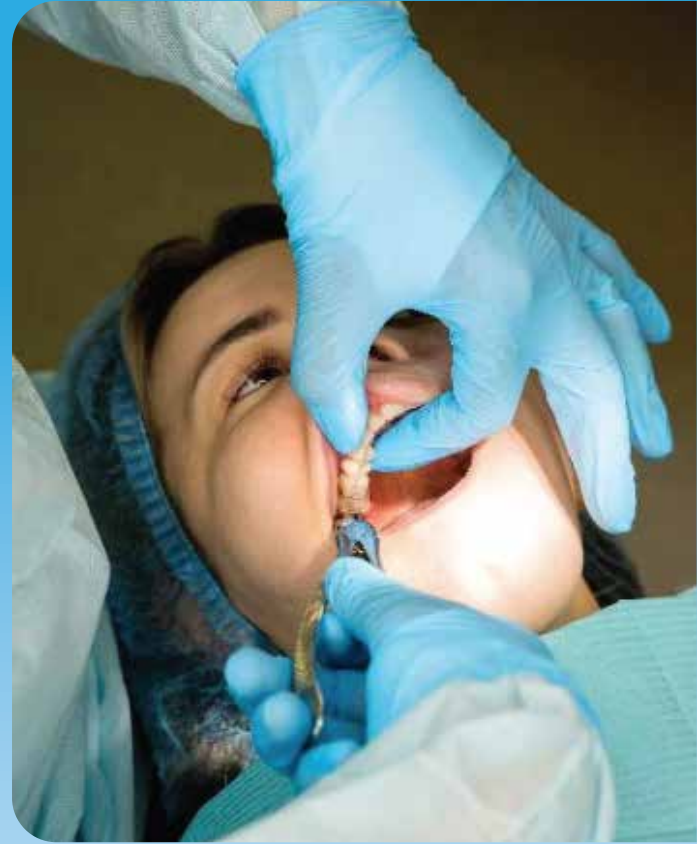
This module aims to foster an evidence-based approach to patient selection while equipping you with the practical skills needed to identify and deliver advanced treatment modalities and conduct risk assessments in multidisciplinary procedures.

It's objective is to highlight potential complications in oral surgery and for students to be able develop risk assessment strategies to avoid and minimise complications.

Realistically it is not possible to prevent all complications, so management strategies are an essential.

The module will explore the ethical issues of informed consent and management of patient expectations.

The module develops communication skills, organisation and planning, problem solving, treatment planning, risk assessment, ethical responsibility and consent.





Aetiology & Diagnosis

This module will provide a sound understanding of the key causes of diseases of the oral cavity; their diagnoses, associated systemic conditions and appropriate medical treatments and surgical management.

This will include conducting a literature search and critically appraise current evidence relating to the management of oral pathology and its evidence-based management. Through understanding and the use of appropriate academic resources students will focus on how to incorporate ideas from their reading into an assignment using quotations, paraphrases and references.

Three Dimensional Digital Imaging Techniques, Interpretation and Technology

This module offers an introduction to Cone Beam Computed Tomography (CBCT) through a series of practical training sessions focused on three-dimensional imaging systems and their foundational principles. You will develop skills in navigating and interpreting three-dimensional images.

Throughout the module, you will learn about the fundamental technology behind CT scans, including their advantages and limitations.

Additionally, you will gain knowledge of the operating and legal requirements essential for the safe and effective use of radiographic equipment, as well as the health and safety considerations related to ionizing radiation.



Tissue Regenerative and Augmentation Techniques

This module will provide a sound understanding of the key concepts of augmentation of den-to-facial soft and hard tissues and help students to develop the practical skills necessary for successful and predictable regeneration of lost tissue.

Students will conduct literature searches and critically appraise current evidence relating to the management of tissue defects or diseased tissue. Through understanding and using appropriate academic resources students will focus on how to incorporate ideas from their reading into an essay using quotations, paraphrases and references.

This module will also consider potential complications and risk assessment strategies to avoid and minimise complications. The module develops communication skills, organisation and planning, problem solving, treatment planning, risk assessment, ethical responsibility and consent.

Understanding Research & Critical Appraisal

This module is designed to help you develop the research skills necessary to identify your dissertation topic, create a detailed proposal, and plan your research effectively. It will equip you with the academic skills required for Master's level study.

The module encompasses key areas such as clinical statistics, evidence-based practice, critical appraisal, measurement, and research design, with a focus on their specific applications in medical research and treatment.

You will learn how to formulate realistic research objectives and establish an appropriate conceptual and analytical framework for your study.

Additionally, you will acquire skills in identifying, collating, and critically reviewing relevant literature, enabling you to make informed decisions regarding the research philosophies, strategies, and methods best suited to your project.



Reflecting Clinical Practice of Oral Surgery

As an experienced dental professional, this optional module invites you to critically assess your own knowledge base and reflect on the connections between your existing expertise and what you aim to learn through the evaluation of clinical cases.

The module promotes information literacy by encouraging the use of contemporary and seminal sources to create a critical evaluation of dento-alveolar practices, enabling you to develop strategies for enhancing your practice.



Dissertation



This taught module offers the opportunity to conduct an extended and significant research project. It enables you to synthesize the academic knowledge gained from your previous postgraduate studies and practical experiences to create an evaluative and critical discussion on a specialist dental topic directly related to your program.

The module aims to enhance your skills in identifying a problem, determining its significance, formulating a hypothesis or proposition, designing a method for testing the hypothesis, and evaluating the results.

MSc Key Features

1. Face-to-face teaching delivered from modern advanced facilities at the SynTrain Academy Campus in Bolton
2. Clinical Hands-On Training in a Phantom Head Skills Lab
3. A personal academic coach will provide regular online tutorials to support learning and guidance through course modules on a one-to-one basis. The coaches are there to help you as needed to ensure your success.
4. Adjunctive programmes, supplemental formative courses which support your compulsory modules and deliver live regular interactive clinical training.
5. Clinical Attachments in Dental Practice where you will be treating patients.

What's Included In The MSc?

	Postgraduate Diploma In Dento-Alveolar Surgery	Postgraduate Diploma In Dento-Alveolar Surgery	MSc Degree In Dento-Alveolar Surgery	MSc Degree In Dento-Alveolar Surgery
	HANDS-ON	DISTANCE LEARNING	HANDS-ON	DISTANCE LEARNING
Unit 1: The Examination & Anatomy	Included	Included	Included	Included
Unit 2: Singular Tooth, Multiple Teeth & Retained Root Extractions	Included	Included	Included	Included
Unit 3: Pathology & Complications	Included	Included	Included	Included
Unit 4: Trauma, Medico Legal & Crown Lengthening	Included	Included	Included	Included
Unit 5: Bone & Bone Disease	Included	Included	Included	Included
Unit 6: Exodontia Assessment	Included	Included	Included	Included
Unit 7: Orofacial Infection Complications	Included	Included	Included	Included
7 Separate Hands-On Days	Included		Included	
5 Mentorship Days With Live Patients	Included		Included	
Reflective Clinical Practice of Dento-Alveolar Surgery			Included	Included
Understanding Research & Critical Appraisal			Included	Included
Dissertation			Included	Included

Course Fees

	Fees (Inc VAT)	Advance to MSc (Inc VAT)	Total Fees Paid (Inc VAT)
Postgraduate Diploma In Dento-Alveolar Surgery HANDS-ON	£12,700	£9,700	£22,400
Postgraduate Diploma In Dento-Alveolar Surgery DISTANCE LEARNING	£7,900	£5,500	£13,400
MSc Degree In Dento-Alveolar Surgery HANDS-ON	£22,400		£22,400
MSc Degree In Dento-Alveolar Surgery DISTANCE LEARNING	£13,400		£13,400

Payment Terms

Payments can be made upfront/finance options available

Enquire Now - Call or WhatsApp on 07840 607695

**MSc Degree In
Dento-Alveolar Surgery**

**Patient Assessment &
Risk Management**

Aetiology & Diagnosis

**Tissue Regenerative &
Augmentation Techniques**

**Three-Dimensional Digital Imaging
Techniques, Interpretation & Technology**

**Reflective Clinical Practice
of Oral Surgery**

**Understanding Research &
Critical Appraisal (URECA)**

Dissertation



**Exit Here With A
Postgraduate
Diploma**



**Exit Here With A
Master of Science
Degree**

Basis of the syllabus

NHS Guide For Commissioning Oral Surgery

Level 1 Procedures and Conditions

- Extraction of erupted teeth, including uncomplicated erupted third molars.
- Assessment and appropriate referral of unerupted, impacted, ectopic, and supernumerary teeth.
- Extraction of buried roots, including fractured or retained root fragments where appropriate.
- Investigation, diagnosis, and initial management of oral mucosal diseases.
- Early recognition and referral of patients with suspected pre-malignant or malignant lesions via the urgent two-week referral pathway.
- Management of dental trauma, including re-implantation of avulsed teeth.
- Management of post-extraction haemorrhage.
- Diagnosis and treatment of localised odontogenic infections and post-operative surgical complications using appropriate therapeutic agents.
- Recognition and urgent referral of patients presenting with major odontogenic infections.
- Diagnosis and initial management of craniofacial pain disorders, including temporomandibular disorders, and identification of patients requiring specialist care.

Level 2 Procedures and Conditions

- Surgical removal of uncomplicated impacted third molars requiring bone removal.
- Surgical removal of buried roots and fractured or retained root fragments.
- Management and surgical removal of uncomplicated ectopic and supernumerary teeth.
- Surgical exposure of teeth, including the placement of orthodontic brackets or chains where indicated.
- Surgical endodontic procedures (apicectomy).
- Minor oral soft tissue surgery for the excision of clinically non-suspicious lesions, including submission for histopathological examination and diagnosis.

Admissions Criteria

Entrants must satisfy the following entry requirements:

Normally at least two years' demonstrable postgraduate clinical experience in clinical practice as a:

- Qualified dental practitioner
- Current registration with the UK General Dental Council (GDC) or equivalent in another country
- Evidence of appropriate professional liability insurance/Medico-legal indemnity insurance as may be required for the designated clinical setting at an appropriate level
- Access to clinical practice setting that gives enough exposure to the relevant area of clinical specialism

Apply for a Student Scholarship

At The University of Greater Manchester, we understand that pursuing education can come with financial challenges. To support individuals in need, we've introduced a scholarship scheme specifically for clinicians.

This program is designed to provide financial assistance and help make education more accessible.

Scholarship Specifications

Each year, a limited number of scholarships are available through our student scholarship scheme. These scholarships provide up to £5,500 towards the cost of Postgraduate education.

Eligibility Criteria:

- Students enrolled in a Postgraduate program.
- Students who have completed an accredited Postgraduate Diploma course are also eligible to apply.
- Students must have a current registration with the UK General Dental Council (GDC) or equivalent in another country.

Terms & Conditions:

- **Validity Period:** If successful, the scholarship is valid for a limited period to allow other candidates the opportunity to apply. Each scholarship offer is valid for 3 months from the date of award.
- **Program Eligibility:** Scholarships are available exclusively for select MSc and Postgraduate Diploma programs.



